



R.R. #1, 1059 Queen's Bush Road
Wellesley, ON N0B 2T0
519 656-2830

kids & CO. Newsletter

Telephone No. 519-656-2830

Safe Arrival Program 519-570-8141 ext. 3900

Website: <http://wel.wrdsb.ca>

Twitter - @welwrdsb

Vol. XXXII • No 4 • May 27, 2014

Principal: Brian Morgan

Vice Principal: Rita Givlin

Principal's Message

Typical of most schools at this time of the year, Wellesley continues to be a hub of excitement and activity. During the past couple months, staff and students have participated in various academic and co-curricular activities. Several exciting events are planned for the final few weeks, so please check the "Coming Events" in this newsletter so you don't miss out!

We are looking forward to an amazing finish to an excellent and successful school year.

We believe all children should have equal opportunities to be successful at Wellesley. Our school improvement plan continues to focus on improving classroom instruction performance and the ability of all students to communicate their thinking. Our teachers have been working together to further develop instructional leadership capacity. Our goal is to provide ongoing, timely and descriptive feedback to students so they may achieve increased academic success.

As parents, you can help guide your children through the next few weeks by staying involved with reviewing school work at home, attending school activities, as well as communicating directly to teachers when necessary. Parents at Wellesley P.S. have proven to be caring partners in a school community dedicated to the education of all of our students.

Our staff thanks you for your support. By continuing to be involved with your child's academics, you are promoting a desire to help them want to learn. Thanks for taking the time to sit down with your child and letting them share with you, discuss with you, and maybe even teach you a thing or two!

A Tribute to Our Volunteers

At Wellesley Public School, we are very blessed with the incredible number of people who provide volunteer support to our school. Our volunteers are amazing! Some volunteers support our school on a weekly basis, others on a monthly basis, while some help whenever they can fit it in. Regardless of frequency, our staff and students appreciate the skills and strengths that our volunteers bring to support our school. Volunteers make it possible to run our Nutrition for Learning program, our school council, class trips, fundraising bingos, environmental efforts, gardening, school sports, clubs and much more. As a thank you to all volunteers, our students will be writing personal notes of recognition to acknowledge the support we have received from each volunteer. The school will be making a donation to the Waterloo Education Foundation in lieu of gifts.

A Tribute to Staff and Students

Many thanks go to our staff members who volunteer their time to provide co-curricular opportunities for our students. They spend time after school, before school and during break times to offer clubs, sports and special trips. This time of year is especially busy with upcoming trips for intermediate students to camp and Quebec City. We have just finished Kodaly choir and our field is currently busy with students practicing for track and field. It is important to recognize our students who also contribute to our school by volunteering their efforts. We have many students who assist as library helpers, lunchroom helpers, Radio Wellesley announcers, attendance, pizza and milk, outdoor PALS, bus patrols and much more. A huge thanks to all of you!

Brian Morgan, Principal

Rita Givlin, Vice Principa

Update re: Parking Lot Concerns

As we head further into the school year, our parking lot continues to be an area of concern. **In the past few months, there have been several incidents where the safety of students and parents has been jeopardized.** Some of the drivers in the parking lot have been quite aggressive, rude to staff and administration, distracted, and driving in an unsafe manner.

We have tried to make the parking lot safer by having more adult supervision, by having the by-law officer more regularly, and by using large orange pylons to indicate the flow of traffic and drop off zone. Although these options have helped from time to time, **we still continue to experience unsafe situations.**

As our school continues to grow (we will have almost 750 students next year), our parking lot will continue to get busier. We will have an increase in the number of staff members and we will also have over 150 kindergarten students. Due to the increased size of the school, the Township and architect have made some changes to what our parking lot will look like for next year. They have added some spaces and have altered how the spots are located within the lot. This has presented some further challenges for us.

As a result, there have been discussions with School Council, the School Board and our by-law officer with regards to best options for what to do with the parking lot. **At this time it has been decided that the parking lot will be closed next year.**

This means there will be no student drop off in the lot. It also means you may not park in the lot before school to drop off your child nor at the end of the day to pick up your child.

There will still be a few visitor parking spots for our visitors and volunteers during the day. There will also be a few spots (with specific timelines) for parents who will be dropping off and picking up children at the daycare.

We realize this may cause some inconvenience for some of our parents. However, the changes are being put in place to create a safe environment for all of our students. We are fortunate that our school community lives so close to our school. We are also fortunate that there are several routes to get onto school property (paved walkways at the front of the school and off Henry street, in addition to one paved and one grass walkway off Ferris Street). We also have a crossing guard to help students cross in front of the school.

We are in the process of designing signage for next year and creating a map that will indicate areas where students may be dropped near the school. **Ultimately it is our hope that more students will walk to school to reap the benefits of the physical activity.** A recent research paper has indicated that one of the major factors related to obesity in children is due to the fact that they don't walk to school any more. We hope that more of our students can walk to school in the future.

This provides a great opportunity for neighbours to get together and walk together or possibly take turns walking each other's children. There may be an opportunity for some of our older students to walk some of our younger students. There are a variety of options available and it may take some thinking on the part of parents to find which option will work best.

For now, we continue to ask parents to drive safely in the parking lot – be patient; watch for students and parents; wait until you are in the drop off zone and pull up to the last large cone to drop off your child(ren).

In our ongoing efforts to inform the community, we will be sending home more information at the end of the year regarding the use of the parking lot. A map of areas where students can be dropped off or where parking exists will be included. We thank you all for your support in ensuring the safety of your children and our students.

EQAO Testing

Provincial testing will once again take place this spring. All grade 3 and 6 students in Ontario are expected to participate in EQAO's annual assessments. These assessments require students to apply their knowledge and skills in the areas of reading, writing and mathematics.

Thanks for making every effort to book appointments and lessons outside of the days listed below.

The dates are as follows:

Grade 3 classes: June 2, 3, 4, 5

Grade 6 classes: May 26, 27, 28, 29

Are you moving?

As we continue with staffing preparations for the next school year, it is important that our numbers are as accurate as possible. If you have moved, or you know that you will definitely be moving before September, please call the main office at 656-2830 as soon as possible. This helps us immensely as we prepare for September.

Safe Welcome Program – NEW for 2014-15

In December 2012, the Provincial Government announced its intention to enhance security measures in elementary schools across Ontario. Implementation of this initiative will occur by September 2014 at all elementary schools in WRDSB. **All doors to the school will be locked during the day.** This means that all visitors (parents, vendors, and central Board staff) to elementary schools will **access the main doors to the school using an intercom system.** The system will integrate the needs of the before/after school programs and portables.

It is recognized that this will be new for the Wellesley school community in September. Since there may be some growing pains with the implementation of this new initiative, we will need to work together and have patience.

Staff, school administration and Board staff will continue to dialogue regarding this new program. As a result, there will be further information coming home in June with the report cards and more information in September. Thanks for your ongoing patience and support as we continue to work on effective ways to ensure the safety of your children while at school.

The link below will direct you to locate alternative child care programs in our geographical area.

<https://regionofwaterloo.onehsn.com/>

No Dogs on School Property

There have been several concerns raised about the increased number of dogs and their behavior on the school property in the mornings and after school during pick up. There are ongoing concerns since we will have close to 750 students on the tarmac next year before and after school. Many students are quite anxious around the dogs.

As a result, there have been discussions with staff, parents and School Council. It has been decided that in the interest of safety for all children/parents/guardians, dogs will no longer be allowed on the school property before school and immediately after school during pick up. We appreciate the fact that parents like to walk their dogs to school along with their children.

However, we ask that as of June 2, 2014, parents no longer bring their dogs with them onto school property when picking up or dropping off students at school. Thanks in advance for your respect and co-operation

Extended Day Program here for 2014-15

I am pleased to confirm that our school will be offering the Extended Day Program for Junior Kindergarten to Grade Two students during the 2014-2015 school year.

All families that expressed their interest through the WRDSB website, prior to April 30th, will receive a formal letter in mid-June outlining further details and next steps.

Families who were not able to indicate their interest before April 30th will have the opportunity to register through our registration system at <http://www.wrdsb.ca/beforeafter> **after June 15th.**

If you have any further questions please contact The Extended Day Program information line at 519-570-0003 ext 4704 or email beforeafter@wrdsb.on.ca.

At this time of year, please review with your children the expectations for dress code and bicycle safety that are outlined on page 4 in the handbook. Dress Code expectations are also listed below.

Dress Code

Wellesley School Council has approved the following dress code for staff and students

1. Message shirts and other clothing may not contain swear words, sexual messages, inappropriate comments, inappropriate images or promote drugs or alcohol.
2. Hats should be taken off as students enter the building. Hats are permitted during special theme days.
3. Sleeveless tops should have straps that would be the thickness of 2 fingers.
4. Underclothing may not be exposed.
5. Shorts and skirts are acceptable but must go down to mid-thigh.
6. Shoes must be worn at all times. Beach flip flops are not acceptable because they do not provide adequate support while playing.
7. Indoor shoes and outdoor shoes are required in order to maintain cleanliness in our school.

If clothing does not meet our dress code standards, students will be asked to change. Alternative clothing may be provided by the school. If necessary, students may be asked to go home and change.

No Youth Development Program for 2014-15

I regret to inform you that the Waterloo Region District School Board's **Youth Development Program will not be operating** at our school next year due to insufficient interest.

We apologize for any inconvenience this may cause **OneList Waterloo Region** is an Early Learning and Child Care on-line registration site.

Visit our School Website

(wel.wrdsb.ca)

We encourage parents/guardians to visit our website regular for current information on school updates and happenings. Many parents have given us positive feedback about the new “**subscribe**” feature on our website. **All you need to do is register your email address and you will receive an email every time there is a new post!** A great way to stay informed about Wellesley P.S. happenings!

Follow us on Twitter - @welwrdsb

The administration and many of our teachers have accounts. We will continue to provide quick updates on twitter for our school and community. Our students would appreciate your feedback if you are able to respond with a tweet.

Social Media Presentations on June 2nd

As a Safe, Caring and Inclusive School we teach about digital citizenship every day as learning opportunities arise. We have invited Chris Vollum back to our school on **Monday June 2nd** to support our learning. Chris will speak with all students in grades 5-8 at noon, to interested staff at 3:00 p.m., **and to parents at 6:30 p.m.** All are welcome. We hope that you can join us. Bring your device and a friend! Please find the flyer included in newsletter.

Safe, Caring and Inclusive Schools Survey

Parents and guardians of all students in kindergarten to Grade 8 are asked to complete the survey. The survey is open until the end of May and is available on our website - wel.wrdsb.ca

Construction Update

As most of you may have seen, construction has been ongoing for a few weeks at Wellesley. The construction of our two new junior rooms is well underway and it is great to see the walls taking shape. We are pleased to share that everything is on schedule with this project so far. We are thankful to the workers for the respectful manner in which they have been working during the school day (by limiting the noise as much as possible.) Our kindergarten renovation project is still scheduled to start at the end of June. We look forward to sharing these new rooms with all of you in the fall.



QSP Magazine Fundraising

You can order magazines online and support our school anytime by visiting www.qsp.ca and entering our online account number: 7708

Bus Information-2014-15



Your transportation details will be available on **August 21, 2014.** Parents and students will be able to login and view their transportation details for the next school year.

Please Note: any address changes need to be done through our school. If you are moving this summer or change your sitter arrangements for the fall, you should communicate the change of address to the office before the end of June.

Find your transportation details by visiting www.stswr.ca and click on Student Login. To login you will have to enter the following information:

- Ontario Education Number (from report card)
- Student's birthdate (day, month, year)
- Street Number (street # from student's home address)
- School (select school from the drop down)

Since most **JK students** will not have an OEN number prior to September, STSWR will be sending a direct mail out to the families of Junior Kindergarten students that will be transported next year. **Senior Kindergarten** students will receive a postcard with Student Login Information. **Letters and Postcards will be mailed during the week of August 15th.**



Reminder – new bell times for
2014-15
Start – 8:55 a.m.
Finish – 3:15 p.m.

Thank You for Your Generosity!

On Thursday, May 1st, Wellesley students skipped and shot hoops to raise \$7,345 to support the Heart and Stroke Foundation's work. Our sincere appreciation is extended to everyone who supported this fundraiser. Jump Rope for Heart not only funds important research; it also helps us all take care of our hearts by getting active.





Girls' Basketball Team

This season the girls' basketball team was in a rebuilding phase. All the girls on the team, except one, had never played the game of basketball before this season. The girls improved by leaps and rebounds this season. Thank you to all the parents for driving, and coming out to watch. We appreciate your support. Great season, ladies!

Team Roster:

Coaches- Mrs. Faulhafer and Mr. Donofrio

Gr. 8 students : Brooke H., Amanda K., Madelynn J., Jessie M., Janessa P., Katie M., Regan S., Rylee S., Megan B., Erika Z., Madeline G.

Gr. 7 Students: Jacqueline B., Sadie D., Cleo P., Amanda L., Kira S.

Boys' Basketball Team

It may have been a year of re-establishing basketball at Wellesley, but our boys' basketball team assembled a powerhouse. The team continuously improved throughout the season. They peaked in the playoffs, winning all three of their games. One of those wins was a thrilling triple-overtime victory. Unfortunately, the final playoff match was not played due to inclement weather. The boys should be extremely proud of the dedication, skill, and teamwork that they displayed throughout the season.



Team Roster:

Coaches: Mr. Settle, Mr. Velle

Assistant Coach: Carson H.

Gr. 8 students: Garret F., Luci T., Elijah S., Jaden D., Nathan B., Jacob W., Cole B., Brett H., Erik H., Nick Z.

Gr. 7 students: Jacob R., Tyler M., Quinn B., Jacob S., Micaiah S.

Grade 7 Science

The results from the 2014 Cardboard Furniture Challenge are in. Thanks to all who took the time to vote either online or during Arts Night. All the furniture pieces were done exceptionally well and a huge Wellesley 'woosh' goes out to all grade 7s for demonstrating Critical Thinking, Collaboration, Communication, Creativity and Innovation in their designs and creations. To see a gallery of all the entries please visit <http://mshergott.weebly.com/grade-7-furniture-2014.html>. In third place, with 76 votes, was a tie between the Sports Mania Desk by Abby S, Sadie D, Soloman M, Oliver B, and the Great Old Hockey

Stick Chair by Abbey F, Laura M, Griffin H, Dayne G. In second place, with 78 votes, is the Simpson's Belly Bench by Charlotte B, Jayden W, Quinn B, Mahlon B. In first place, with a whopping 154 votes, is the Candylicious Desk by Edward B, Lovina B, Nelson B. Congratulations to all our winners!!

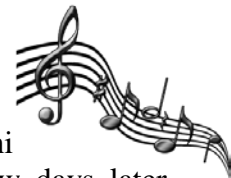


Grade 8 Science

On Friday, May 9th the Grade 8s represented Wellesley Public School at Canada's Wonderland marble roller coaster competition. We were able to enter 4 marble roller coasters from the grade 8 creations. The 4 roller coasters that represented Wellesley were: **Winter Wonderland** by Janessa P, Owen B, Blendina M and Jaiden D, **Galactic Space Junk** by Ben M, Erika Z, Cole F, Megan B, **The Ark of Awesome** by Katie M, Elizabeth S, Luci T, Cole B, **Shoot for the Stars** by Ashley J, Meredith S, Jacob D, John B. A special congratulations and Wellesley Woosh goes out to the Winter Wonderland Crew for placing 2nd in the technical merit score out of 56 roller coasters at Canada's Wonderland. To see the all of the roller coaster creations please visit: <http://mshergott.weebly.com/grade-8-science.html>. For more information on the competition please visit: <https://www.canadaswonderland.com/group-sales/student-and-youth-programs>

Music Notes

The Wellesley Public School Kodály Choir had a terrific season! The 28 voice choir participated in a mini concert at Arts Night and then, a few days later, joined a mass choir of 500 to sing at the Centre in the Square at the Kodály Choral Festival. The choir learned 18 songs, memorized, and represented our school with pride and confidence. The opportunity to take part in this event is given to students in grades 4 - 6. This year, the students from Wellesley were in grades 5 and 6. The students in grade 4 joined the Kodály Choir as part of the Junior choir. This choir sang at Arts Night and will also be singing at a few assemblies in June. The grade 4 students are already getting excited about the opportunity of becoming members of the Kodály Choir in the next year. Congratulations to all singers for their commitment and energy during the multitude of rehearsals and thanks also to the staff, Mrs. Fritsch, Mrs. Golnik, and Mr. Velle for their dedication to the success of the choirs.



School Reading Programs News!

We had fantastic results from our yearly reading programs. Many thanks to the School Council for their financial contribution to help purchase additional copies of the books for our eager readers! Here are the winning results in addition to some interesting statistics!



Blue Spruce (all JK-Gr. 2 students)

282 students voted for their favourite book. Wellesley's pick was *This is Not my Hat*. The official winner from all of Ontario is *Oddrey*.

Silver Birch Express (Gr. 3-4)

There were a total of 107 participating students who read 539 books!!! A total of 82 Wellesley students voted and the winner was *Jason's Why*. However, the official winner is *Secret of the Village Fool*.

Silver Birch Fiction (Gr. 5-6)

A total of 62 participating students read an incredible 341 books! I am pleased to say a total of 43 Wellesley students voted and their choice for winner was *Yesterday's Dead*. Results show the official winner is *Record Breaker*.

Silver Birch Non-Fiction (Gr. 5-6)

In total, 27 students read 106 books. Of those, 19 were eligible to vote for their favourite. An overwhelming favourite of Wellesley's voters was *One Step At a Time: A Vietnamese Child Finds Her Way*, which was also the official winner for this year.

Red Maple (Gr. 7-8)

Even though 46 students read a total of 160 books for this program, due to conflicts, only 9 of the 20 eligible students came to vote for their favourite book. Wellesley's favourite pick was *Between Heaven and Earth* although the overall winner from Ontario was *The Reluctant Journal of Henry K. Larsen*.

Despite Wellesley's picks not matching many of the official winners, it can definitely be said that we are all better for having read these fantastic books written by Canadian authors. Many thanks to the teachers for supporting this program in their classrooms!

~Mrs. K. Hamm

Elementary School Nutrition Service Fundraising

Thank you for supporting this school fundraiser. The funds raised throughout the year are used for special events for students.

Sincere appreciation is extended to Mrs. Elizabeth Schroth, Christopher and Kristina for organizing our pizza deliveries every Friday. Without their support and effort, the pizza program could not run.

Thank you also to Blendina M, Lizzie S., Selina S., Amanda S., Minerva B., Martha B., and Lena S. for diligently and efficiently helping to fill the cooler bags daily with milk and nutritional snacks.



Reminder for Gr. 6 & 7

Campers:

Camp permission, medical form, behaviour form, and payment (Cheques payable to Wellesley Public School) are due Friday, JUNE 6TH!

Please submit all forms and payment to Mrs. House. Thank you!

Wellesley School Green Team News

The Green Team exhibited tremendous responsibility in continuing to encourage Wellesley's 'Green Initiative' through an efficient recycling and composting program with our green and blue bins. Congratulations to our Green Team Members for continuing to provide strong leadership within our school environment.

We encourage our school's community to follow Wellesley School's 'green' example and help to protect our environment through recycling and composting efforts at home.

Make every day Earth Day! Keep up the great work all summer too!



Community News Section



Inspiring Minds Early Learning Centre

Summer Camp Weeks for children

entering Gr. 1 to 12 years old

To register or for more information call Krista Schott 519-656-1003 or email info@inspiringmindselc.ca

Wilmot Family Resource Centre Summer Fun!

Full Day Camps for Children entering SK to Grade 6

Monday to Friday 8:30 a.m. to 4:30 p.m.

@New Hamburg Community Centre

For more information: www.wilmotfamilyresource.ca, cr4wfrc@bellnet.ca, or 519-662-2731

Wellesley ABC Idol

Youth Singing Competition

Tryouts: Sunday, June 1, 2014 at 2:30 p.m. at the Wellesley Community Centre.

Semi-finals: Wellesley Fall Fair, Tuesday September 9, 2014, Wellesley Arena

Finals: Saturday, September 27, 2014 at the Wellesley Apple Butter and Cheese Festival

(<http://wellesleyabcfestival.ca>)

Youth 10 – 18 years of age (between June 1st and September 27, 2014) who live and/or attend school in Wilmot, Woolwich, Wellesley and Perth East Townships are eligible to enter.

For a registration form and complete set of rules please contact:

Wendy at 519-656-2961 or wrichardson@cwisp.ca

Kathy at 226-241-9070 or k.glasser@hotmail.com

Chris Bender, 519-656-2034 or fbender@sympatico.ca

✂ *****

Newsletter

In order for your children to be entered in the newsletter draw, we ask that you fill out the response form below. This helps us to know what is rewarding at school for your child and also, your suggestions on how we can improve. Thanks so much for your continued support.

TO BE BETTER...LET'S WORK TOGETHER!

Share what's great about Wellesley P.S. Your positive feedback is appreciated.

An Idea:

Name: _____ (please print)

Please return your newsletter response by June 4th. Please see our positive response allowing my child(ren) to be entered in the monthly draw.

_____ My Child(ren)'s Name(s)

